



# SADHGRUHA

AGRO FARMS AND RESORTS

స్వచ్ఛమైన మీ కలలకు... అచ్ఛమైన ప్రతిరూపం... “సద్గృహ”

VISAKHAPATNAM | VIZIANAGARAM

Dreams Begin Here  
Families Thrive Together

Sukeerthi  
Siri Vizianagara  
*Pride*



A Gated Community  
@ Gunupurpeta, Near Vizianagaram

# Sukeerthi Siri Vizianagara *Pride*

A Gated Community  
@ Gunupurpeta, Near Vizianagaram

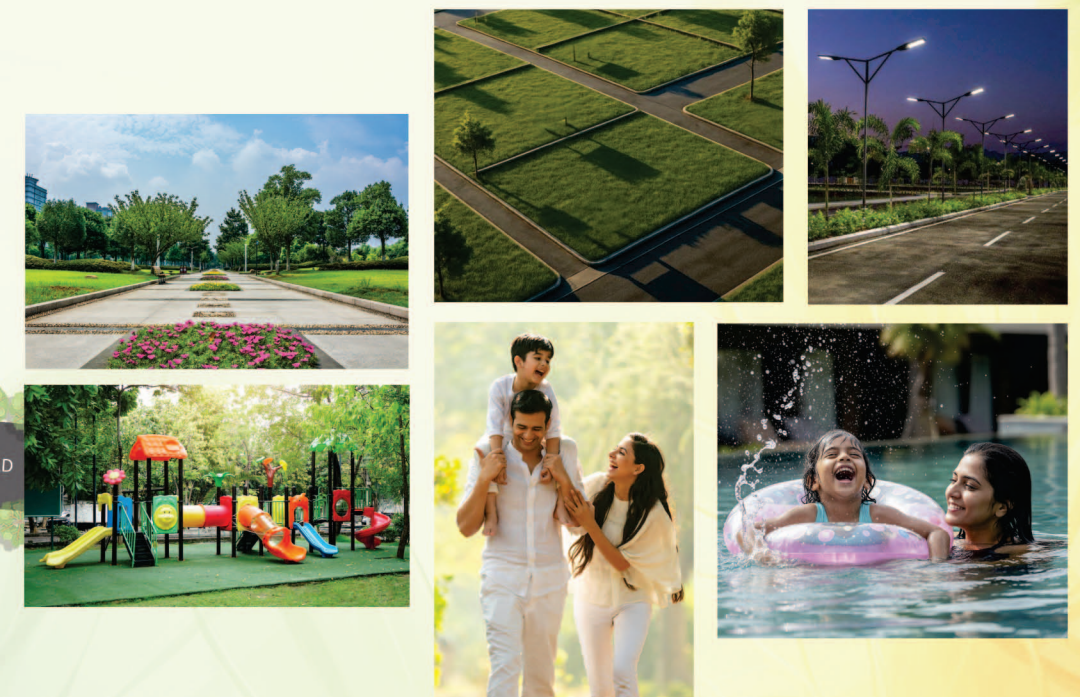
Every Detail Counts  
Living Made Complete

Siri Vizianagara Pride blends infrastructure and thoughtful design into a complete living environment. Wide roads, secure boundaries, and green avenues ensure comfort and safety, while amenities create everyday ease. It is a foundation built for lasting assurance and a modern lifestyle.

L.P. No: 18/2026/1167/VMRDA/DPMS | RERA No. P02270086637



- VMRDA & AP RERA APPROVED LAYOUT
- DESIGNED ENTRANCE ARCH
- 100% VASTU COMPLIANT
- DOMESTIC ELECTRICITY
- 40' & 30' WIDE CC ROADS
- COMPOUND WALL
- AVENUE PLANTATION
- CHILDREN PLAY AREA & PARK
- STREET LIGHTS
- UNDERGROUND DRAINAGE
- 24x7 SECURITY
- PRIME LOCATION





Scan for Site Location

LOCATION MAP  
NOT TO SCALE

# Sukeerthi Siri Vizianagara *Pride*

A Gated Community  
@ Gunupurpeta, Near Vizianagaram

## Where Paths Meet Dreams Take Flight

Beyond proximity, it is a presence. A location where every road leads to opportunity, every turn brings convenience, and every horizon whispers growth. Here, life is centered, connected, and elevated, making home the true heart of tomorrow.

## Essential Benefits

- ▶ Close to Major Highways: This ensure easy commuting to & Fro from the city.
- ▶ Proximity to Buses, Trains can be a significant advantage.
- ▶ Strong appreciation potential for future development.
- ▶ Luxury & Privacy is major factor where you can enjoy the comfort of home.
- ▶ High-demand growth corridor with limited land supply.
- ▶ Ideal for Long-term holding or high-value land supply.

## Location Proximity

- ▶ Layout is surrounded with fully Developed Residential Area.
- ▶ Very close to upcoming IT Cluster (Gunpur and Denkada).
- ▶ Very close connectivity to Pusapatirega NH-16 Highway.
- ▶ Very Close to Prominent Educational and Medical Institutions.
- ▶ 0.5 kms - Distance from Proposed VMRDA Master Plan - 260 FT Road (Chelluru-Munginapalle-Nellimarla) ORR, Vizianagaram.
- ▶ 02 kms - Distance from Baba Metta & MIMS Hospital.
- ▶ 03 kms - Drive from Jammu Narayana Puram Junction.
- ▶ 05 kms - Drive from Vizianagaram RTC Complex & Railway Station.
- ▶ 07 kms - from Nathavalsa Toll-Gate.
- ▶ 12 kms - Distance from upcoming Bhogapuram International Airport.
- ▶ 15 kms - Distance from Coastal Corridor Road and Sea View.

This Layout is engineered to ensure ease of development, aesthetic appeal and long-lasting asset value.



## Advantages of Buying

- ▶ Potential for Development
- ▶ Economic Growth
- ▶ Potential for Passive Income
- ▶ Residential & Commercial Development
- ▶ Environmental Benefits



### SADHGRUHA AGRO FARMS AND RESORTS

D.No. 55-25-3&6, Dredge House,  
1st Floor, North Wing, HB Colony Main Road,  
Sethammdhara, Visakhapatnam, AP - 530 022.  
[www.sadhgruha.com](http://www.sadhgruha.com)



Scan for Website

concept of TRIOCHI.com



VISAKHAPATNAM | VIZIANAGARAM